

Wind Speed Sensor



The Wind Speed Sensor is part of the SEVEN meteorological sensor range, which includes professional and intelligent measuring sensors with a digital or analog interface for environmental and industrial applications such as PV plants.

It is a measuring transmitter used for the measurement of the horizontal wind velocity.

The measured horizontal wind velocity data are transmitted as analog or digital output signals to the data loggers and receiver units according to the input requirements.

SEVEN products use reliable and high-quality components to provide accurate meteorological information in environmental and industrial applications.

They are specially designed according to the requirements of PV plant monitoring systems.

Benefits and Features

- High Accuracy
- Fast & Simple to Install
- Free Software Update (for Modbus RTU)
- Long Lifetime
- SunSpec Compliant (for Modbus RTU)
- SEVEN Remote Setup Service
- SEVEN Customer Support
- 2 Years Warranty

Models

3S-WS-PLS

Small and economical wind speed sensors with reed relay output. They are ideal measurement transmitters with the best price/performance ratio for the standard requirements of industrial and environmental applications such as PV plants. It can be connected to SEVEN Irradiance Sensor or Sensor Box models, as well as data loggers and other receiver units.



3S-WD-I

Wind speed sensors with analog 4-20 mA output is specially designed for advanced industrial applications and environmental conditions. The housings are made of seawater resistant anodized aluminum, making them extremely durable and resistant.



3S-WS-MB

Professional and intelligent measuring sensors with a digital interface for environmental and industrial applications such as PV plants. The measured value can be transmitted to monitoring instruments, data loggers and other receiving units via the serial RS485 interface with Modbus RTU protocol.



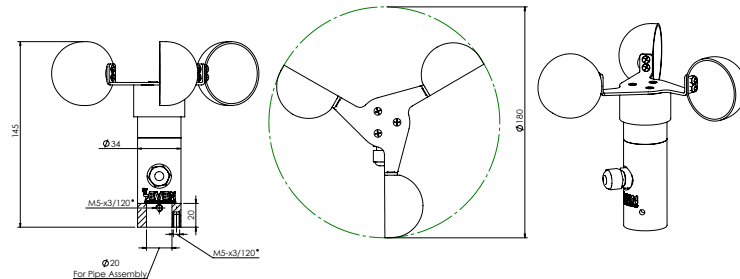
Technical Specifications

| | 3S-WS-PLS | 3S-WS-MB | 3S-WS-I |
|-----------------------------|--|---|------------------|
| Sensor Type | Cup Star Anemometer (Reed Switch) | | |
| Measuring Range | 0,9 to 60 m/s | | 0,9 to 50 m/s |
| Accuracy | Below 5m/s 0.5 m/s and 10% of reading above 5m/s | | |
| Resolution | 0,1 m/s | | |
| Threshold | 0,9 m/s | | |
| Survival Speed | 60 m/s | | |
| Data Output | Reed Relay | Modbus RTU - RS485 | Analog (4-20 mA) |
| Communication Protocol | - | Modbus RTU | - |
| Power Supply | 12 to 30 V DC | | |
| Electrical Connection | 3 m LIYY Cable, UV and Weather Resistant | 3m LIYYC11Y PUR Cable, UV and Weather Resistant | |
| Operating Temperature Range | -40°C ... +85°C (Ice Free) | | |
| Dimensions | Ø: 180 x 145 mm | | |
| Box Dimensions | 82 x 80 x 55 mm (L x W x H) | | |
| Weight | 0,34 kg | | |
| Box Weight | 0,16 kg | | |
| Housing Material | Anodized Aluminum | | |
| Cup Material | ABS* | | |
| Mounting Method | ABS* | | |
| Montaj Yöntemi | Pipe or Ground Mounting | | |
| Standard | Compliant to IEC 61724-1:2021 | | |
| Origin | TÜRKİYE | | |

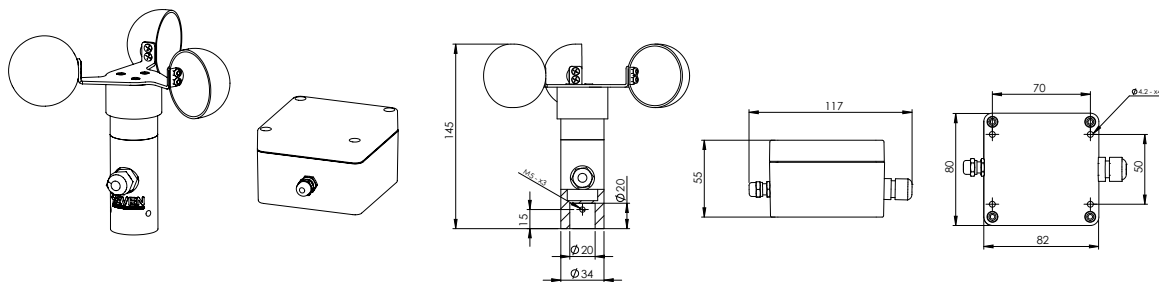
*Since this product contains plastic parts, color changes may occur when exposed to direct sunlight.

Technical Drawings

Technical Drawing of 3S-WS-PLS



Technical Drawings of 3S-WS-I, 3S-WS-I-H, 3S-WS-MB



Note: All dimensions are in mm.